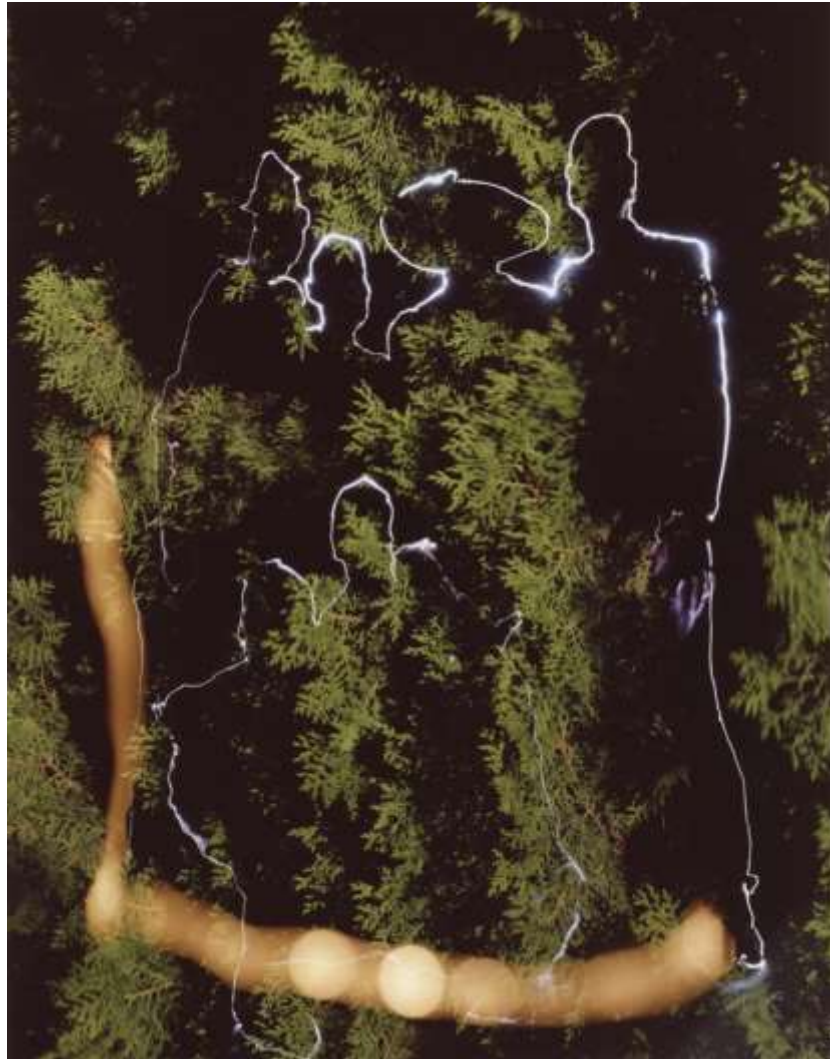


# The USC Institute for Genetic Medicine Art Gallery

Presents:

## Spiritual Matrices By Susan Sims Hillbrand



Chromogenic Print 8" x 10" Vessel Susan Sims Hillbrand

The USC Institute for Genetic Medicine Art Gallery  
2250 Alcazar Street, 2<sup>nd</sup> Floor, Los Angeles, CA 90033

<http://www.usc.edu/igm>

November 15, 2015 – Feb 28, 2016



USC University of  
Southern California



# THE USC IGM ART GALLERY

*An art-framed forum for open-minded, deliberative discussion*

**Dr. Elizabeth Fini, PhD**  
**Director USC IGM**

Dear Friends,

September 2015

**Lynn Crandall, MA**  
**IGM Art Gallery Director**

Thank you for your interest in ***Spiritual Matrices***. We've chosen the rich complexities of geopolitical realities and their socio-psychological impact as subjects of a four month study and focus for events considering art, science and interpersonal communications in their broadest senses. The exhibit and associated events probe how knowledge of structural laws of nature, the scientific process and stewardship of them can aid us in social decision making to ensure sustainable natural and institutional systems.

**Advisory Council**

**YO Pomiro**  
**Sports Committee Chair**

Words and images, powerful tools for spiritual transformation through mindful communication with self, others and the planet constitute artist Susan Sims Hillbrand's inspiring, aesthetic presentations of how a harmonic balance of these tensions is within our grasp. The exhibition and Hillbrand's book by the same title, inspire discussion on the redemptive power of open-minded sharing, memory, and collaborative stewardship. To confront the daunting task of building new frameworks for conscious evolution, a collective vision, and a road map from the past into the deep future are required. This process begins with self-understanding, moral courage and work ethic.

**Blair Franks**, President  
USC Head and Neck  
Cancer Survivors Group

**Robert Donin, MPA**  
Robert Donin Insurance

As we at the IGM Art Gallery, our colleagues in other USC departments and leaders in the surrounding community embark on identifying the challenges associated with this fast paced, monumental change and seek solutions to them, the images and text in this exhibit provide intuitive information on the spirit of creation and the fortitude to deal not only with specific challenges, but with complex challenges requiring multi-tasking, mindful collaboration and caregiving at every step.

**George Szabo**  
Szabo Productions  
Chair, Documentary Committee

We need a collective grasp of where we were and where we are as individuals, biological families, institutions, and communities if we're to become an integrated global family. Honoring the past, confronting reality, and using existing resources will equip us to imagine and invent a bright future for coming generations. Susan's art book, performances, presentations and discussions on her themes can pass this legacy to viewers to make better and pass the legacy to others.

**Steven Gallegos**  
Community Health Advocate

Designed to travel beyond the IGM AG, this exhibition presents the artist's career-long explorations of human behavior as affected by intra-and inter-personal communication. The exhibition, open to the public November 15, 2015 – February 28, 2016 at the Institute for Genetic Medicine Art Gallery, is available to travel to corporate and nonprofit spaces after February 28, 2016.

**Gilda Moshir**  
Co-Founder, Our Parenting Place

**Jim Beddows**  
Global Managing Director

This tool kit outlines the exhibition concepts, artist information, the gallery's education and community outreach programs, all in collaboration with city wide organizations. We hope the kit provides a clear picture of the scope and potential for mutually beneficial projects.

**Institute for Genetic  
Medicine, USC Keck  
School of Medicine**  
**2250 Alcazar Street**  
**CSC 240**  
**Los Angeles, CA 90033**

Your help is needed to continue our education and cultural programs and important art exhibits free to the public, students and university personnel who benefit from them. Questions and/or requests for more information may go to [lynn.crandall@gmail.com](mailto:lynn.crandall@gmail.com) , or 213-705-7489.

**Contact:**

**Lynn.crandall@gmail.com**  
**(213) 207-7489**

Lynn Crandall, Director  
USC IGM Art Gallery  
Medicine

cc: Elizabeth Fini, PhD, Director  
Director, Keck School of Medicine, Institute for Genetic  
Medicine

*The mission of the Institute for Genetic Medicine Art Gallery is to serve as an art-framed forum for open-minded discussion on complex social issues that interface with the creative process of empirical findings in genetic research, health and social systems*

# **TABLE OF CONTENTS**

**Sponsorship Benefits p. X-X**

**Our Audience**

**Your Benefits**

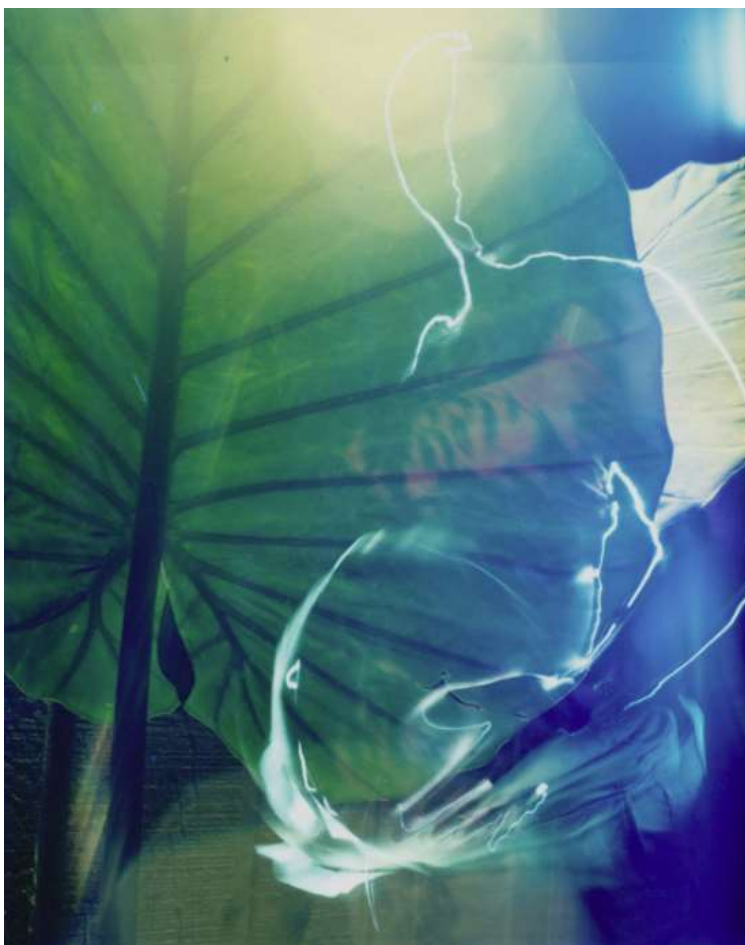
**Director's Statement p. X**

**Artist's Biography and Statement p. X-Xx**

**The USC IGM Art Gallery Program p. Xx**

**Request for Event Procedure**

**Confirmed Event Dates**



**Chromogenic Print 8" x 10" Guardian Angels Susan Sims Hillbrand**

## **SPONSORSHIP**

Sponsors of *Spiritual Matrices* have the opportunity to share in supporting the cultural life of Los Angeles through the mindful works of the exhibition artist. Learning and sharing with the artist and the audience include: students and faculty from the USC Health Sciences and University Park Campuses; the international and cultural community in and around downtown Los Angeles and a variety of events and educational programs sponsored by concerned leaders in L.A.

The IGM Art Gallery chose to invite this exhibition expressly because of the impact of the work on children, youth and their families, health and culture. The impact of the artists' vision on contemporary considerations includes community capacity building, lifespan collaborative strategies for care giving, universal health insurance, aging in place and the interplay between healthy families and healthy communities.

### **Based on funding and existing resources, sponsorship of the exhibition can offer:**

- Opportunities to leverage resources with visionary leaders
- Reinforcement of your firm's or nonprofit organization's image as a substantive supporter of children, cultural life of downtown Los Angeles and local and global community capacity building for One People/One Globe.

### **Sponsors Enjoy a Range of Benefits; specific benefits include:**

**The Audience:** The audience comprises seven key consumer bases

1. The University of Southern California
2. The USC Institute for Genetic Medicine's partners and affiliations
3. Local and international artists
4. Leaders from the vital local and Greater Los Angeles communities and beyond
5. Leaders working on global exchanges such as Sister Cities International Emergency USA, Americans for Informed Democracy and the Audiences in communities to which the exhibition may travel
6. Collaboration with public, private, non profit, faith based, academic and media leaders working with constituents within there area

### **Media Presence:**

Print Coverage Possibilities

1. The Los Angeles Times
2. USC newspapers and others
3. On-Line Coverage – artAngels.org, IGM Art Gallery Facebook posting and other partners' websites
4. USC websites
5. Sponsors' credits, logos, and links on the home page of *Spiritual Matrices*
6. Exhibition site and additional credit on relevant program pages and handouts
7. Many cultural list serves – National and Local Arts and Culture sites
8. E-invites to exhibition receptions and events

### **Exhibit Collateral**

Announcements, programs, posters and catalogs will prominently display sponsor's name and logo and will be distributed locally if sponsorship provides this opportunity. Media relations will include: press releases and media advisories distributed locally by the USC University News Service and IGM Art Gallery media partners. Story pitches and follow-up contact with appropriate media outlets will be provided by IGM Art Gallery media partners. Media events will be organized in partnership with sponsors and community partners, when appropriate.



**Chromogenic Print 8" x 10"**

**Muse**

**Susan Sims Hillbrand**



## **DIRECTOR'S STATEMENT**

The IGM Art Gallery seeks projects with trans-historical and trans-cultural significance that manifest aesthetically valuable representation as well as works that radically transform or abandon conventional modes of representation. By linking the close study of detail and the iteration process of reciprocal relations through our art exhibitions and related forums, we work to illuminate a language and thought process that cuts across boundaries proscribed by conventional notions.

In organic and inorganic nature as well as in human relations, leaders in the fields of pure science, psychology, engineering, architecture, linguistics, criticism, sculpture and painting have applied rigorous investigation of process and patterns to discover basic truth. Now, more than ever, these leaders are enormously affected by rapid change, need to welcome innovation and abandon traditional, outdated methods and theories.

There's a pressing need to communicate across departmental and organizational boundaries, reach agreement on how to pattern human behavior and promote choice making that prevents and heals, stress, conflict and social devolution while promoting collaboration, trust and care giving, locally and globally. Innovation in mastering communications technology, molecular biology, and other globalized advances are providing mankind abundant opportunities to develop probability based choice making and stewardship of self, others and the planet, however, throughout history, the technology is only as good as the vision and moral core of those who apply it.

“Art, like morality, consists in drawing the line somewhere,” stated Gilbert K. Chesterton. Susan Hillbrand's *Spiritual Matrices* draw the line with her penlight to evoke in herself, her subjects and her viewers, our collective search for all the light we cannot yet see, but feel, know, love and trust is there in each of us. That is all we can do to make better what IS. She merges her poetic prayers with her penlight profiles such that the journey of mankind, past, present and future, is one in the moment, a whole far greater than our small, but glowing, parts.

*Lynn Crandall, Director, USC IGM Art Gallery*



Chromogenic Print 8" x 10" Mother Susan Sims Hillbrand

## ARTIST'S BIO



The mystery of glimmering bugs in the darkness inspired her as a young child to capture fireflies in a jar to create a lantern of light. Today the intrigue continues as Susan Sims Hillbrand uses photographic film that captures light in the darkness to reveal the essence of who we are. Hillbrand believes we are beings of light one spirit in human form revealing ourselves in timespace. As an art student at California State University, Northridge, where she received a BFA, Hillbrand started to explore the question, "Who are we and what are we becoming?"

By outlining her body with light she became the "firefly", illuminating the hidden spirit, and the personal exploration began as **Penlight Performances**. These photographs have many layers of imagery to express an archetypal journey that humanity faces on our global path to peace.

A live audio/visual presentation of the work from her recent book, **Spiritual Matrices**, where she combines words and images expressing spirit in action, was performed in 2015 at YES Salon: POEMS for PEACE - LA. The exhibit at USC-IGM is a display of the original photographs from the book.

Hillbrand is a featured artist with **LightPaintingPhotography.com** and has exhibited at numerous places such as:

- Rayko Photo Center, San Francisco, CA
- SF Camerawork, San Francisco, CA
- O'Hanlon Center for the Arts, Marin, CA
- Dayton Visual Art Center, Dayton, OH
- Toledo Friends of Photography, Toledo, OH
- Greathouse Gallery, New York City, NY

Influenced by both her small town Ohio upbringing and living in the urban centers New York City, San Francisco, and Los Angeles, where she currently resides, Hillbrand connects the symbolic relationship of our external and internal life by seeing similarities in the built environment of the urban / agricultural landscapes and our inner spiritual landscape.

In the late 90's, Hillbrand completed a mixed media series that was selected by the Smithsonian *Barn Again* program highlighting the symbolic loss of farmland. Hillbrand's work questioned the relationship to the land and incumbent pressures from money driven development. The piece, *Caution*, from that series was in a National Juried Photography Exhibition.

While attending CSUN Hillbrand was influenced by professor and mentor, Jerry McMillan, renowned for redefining the visual language of photography. Another influence was McMillan's good friend since Junior High and artistic collaborator, Ed Ruscha, whose art embraces the power of using words and images. These are concepts reflected in Hillbrand's work.

Integral to her present research and personal life path, Hillbrand also credits the pioneering work of evolutionary futurists Barbara Marx Hubbard and Jean Houston, who recognized the importance to co-create and heal humanity. Her subject matter is spirit and our relationship to the evolving global community.

While Hillbrand's work is on display at the USC-IGM Art Gallery until Feb. 28, 2016, she will collaborate with the researchers to produce new work, merging their scientific process with spiritual insights to reveal an aspect of humanity's evolution.



Chromatic Print 8" x 10" **Transference** Susan Hillbrand



## ARTIST'S STATEMENT



**Spiritual Matrices** is an exhibit from my book of **Penlight Performances** and **Poetic Prayers**.

Spirit is the non-physical part of a person – breath. Matrix is something from within or from which something else originates, develops or takes form – breeding – womb. These definitions best describe my work. I open the 4x5 view camera lens, walk into the frame and begin to outline people with a pen of light in my hand leaving the essence of who is in the space on the sheet of film. Working like a painter, the light is my brush and the film is the canvas. I call them **Penlight Performances**. The question I ask of those who I photograph is: what 'light' do you bring to yourself, your community and to the world?

The words came as a muse that flowed from a deep inner well of emotions and feelings, coming forth as a rhythm-like cadence that I call **Poetic Prayers**. The prayers are a calling and the images are a response. Words and images together can be a powerful tool for spiritual transformation. How we communicate to each other and our surroundings through relationships and language is the heart of my work.

Each of the sixteen prayers represents a personal archetype. I refer to an archetype as an energy guide to my highest potential. The words in green best describe the archetype I assigned to each prayer. When putting those words together, a new Poetic Prayer emerged calling for compassion and peace. These images and prayers bring me closer to a conscious awakening within myself.

This is the link to Susan Sims [click](#)

This is the link to Light Painting Photography [click](#)



**Chromogenic Print 8"x 10"**

**Elsewhere**

**Susan Sims Hillbrand**

## **EVENTS PLANNED THUS FAR**

- 1. Opening Reception, IGM AG Sunday, November 15, 4 p.m. – 6 p.m.**
- 2. Available**
- 3. Available**
- 4. Available**
- 5. Etc.**